



Swastik Home

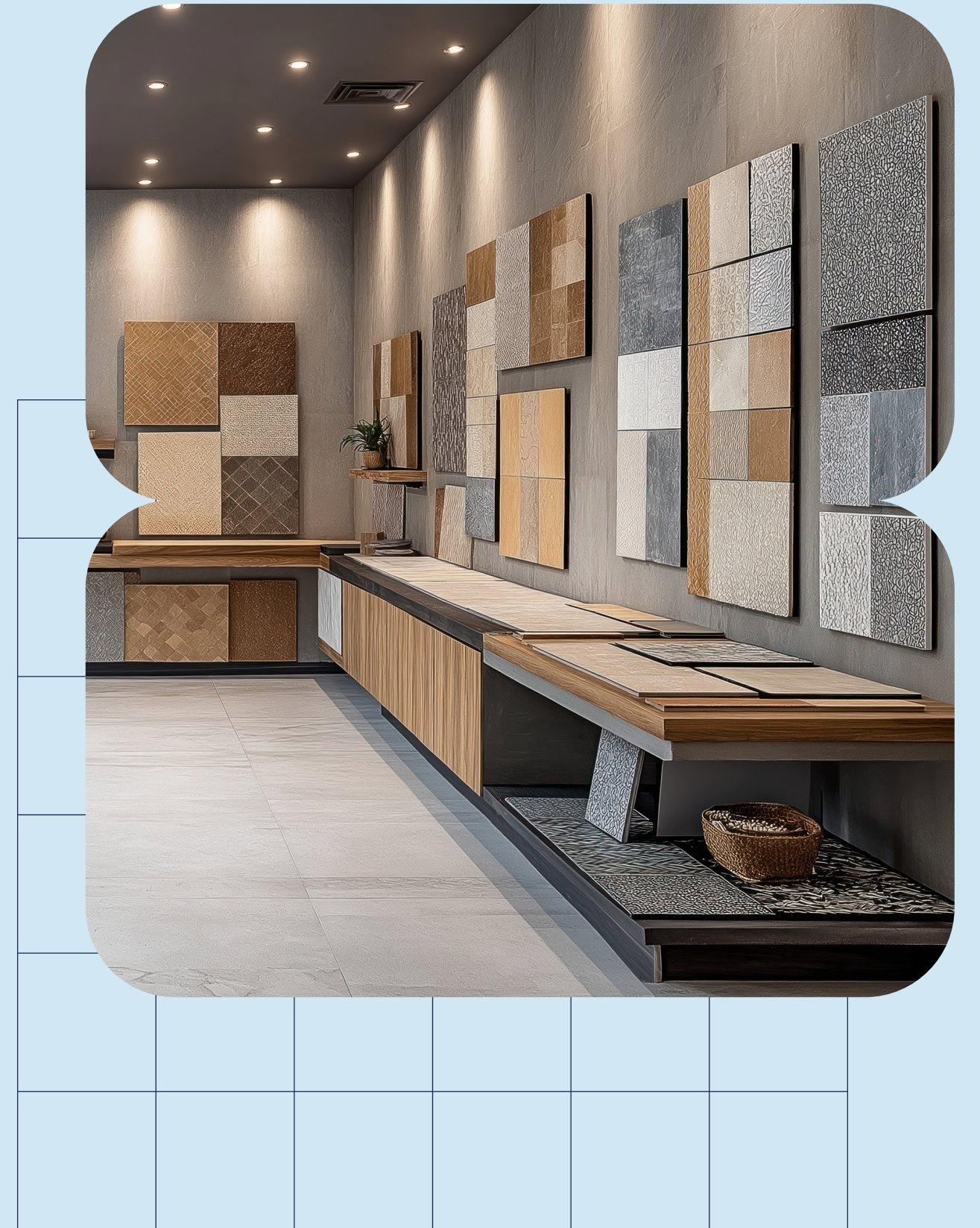
Turnkey Civil Construction and Interior
Solutions in Lucknow

Corporate Office: 401, 2nd Floor, Shopping Square 1, Sushant Golf City,
Shaheed Path, Lucknow, UP - 226030

Contact Number: +91 91514 68657 / +91 84004 68657

Email Address: connect.swastikhome@gmail.com

Website: <https://swastikhome.in>





Agenda

1. Company Overview and Values
2. Construction Expertise
3. Interiors and Renovations
4. Process, Materials, and Quality
5. Portfolio and Client Engagement





Company Overview and Values

Contact Number: +91 91514 68657 / +91 84004 68657

Email Address: connect.swastikhome@gmail.com

Website: <https://swastikhome.in>



Who We Are

One team, end-to-end delivery

- We manage civil construction and interior execution under one roof.
- Design planning and on-site engineering stay aligned throughout the build.

Turnkey across property types

- We deliver complete homes, luxury villas, offices, and interior fit-outs.
- We also handle renovations, restoration, and waterproofing for existing spaces.

Built to reduce client stress

- Single-point responsibility helps reduce contractor confusion and rework.
- Clear scope and coordinated execution help limit delays and quality issues.





Built on Trust

Local experience, proven delivery

- Backed by **10+ years** of contracting work across Lucknow.
- Delivered **50+** premium turnkey projects across key city sectors.

Commitments clients can rely on

- Clear scope and planning help avoid post-agreement cost changes.
- Track record built on consistently high client satisfaction outcomes.





Who We Are

One team, end-to-end delivery

- We manage civil construction and interior execution under one roof.
- Design planning and on-site engineering stay aligned throughout the build.

Turnkey across property types

- We deliver complete homes, luxury villas, offices, and interior fit-outs.
- We also handle renovations, restoration, and waterproofing for existing spaces.

Built to reduce client stress

- Single-point responsibility helps reduce contractor confusion and rework.
- Clear scope and coordinated execution help limit delays and quality issues.





Vision and Values

Our Vision

- Set Lucknow’s benchmark for engineered, premium construction outcomes.

Our Mission

- Make building simpler through transparent, dependable turnkey delivery.

Core Values

- **Safety first** by following strong structural and site practices.
- Use **genuine materials** sourced through verified brand distributors.
- Keep clients informed with clear reporting and shared measurements.
- Maintain engineering discipline with no shortcuts on critical work.





Construction Expertise

Contact Number: +91 91514 68657 / +91 84004 68657

Email Address: connect.swastikhome@gmail.com

Website: <https://swastikhome.in>

Stronger by Engineering



Start with the ground

We begin with soil testing, so foundations match site conditions.



Build with verified inputs

We use branded cement, Fe550 TMT steel, and M20/M25 concrete.



Protect for the long term

Anti-termite treatment and extended curing improve strength and durability.

Turnkey Home Construction



End-to-end build scope

- We manage planning, structure, utilities, plaster, paint, and handover.
- Design drawings and site execution stay aligned under one team.



Approvals and coordination

- Support for LDA approvals, submissions, and on-site demarcation.
- Dedicated site engineers drive schedules and regular progress reviews.



Predictable planning

- **Fixed-price** agreements reduce last-minute financial surprises.

Luxury Villa Delivery



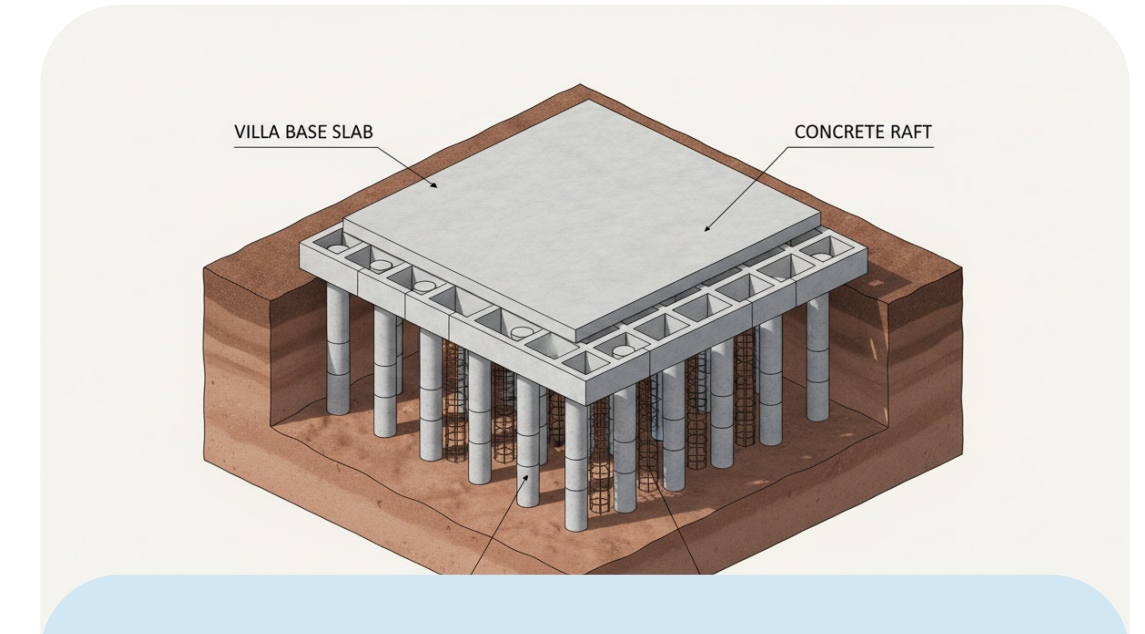
Designed for premium living

- Villas are tailored for upscale Lucknow neighborhoods and lifestyle needs.
- Front elevations can match modern, classical, or minimalist styles.



Signature architectural features

- Double-height living spaces with large glass grids elevate openness.
- Skylights, terraces, and statement staircases add everyday luxury.



Foundations built for local soil

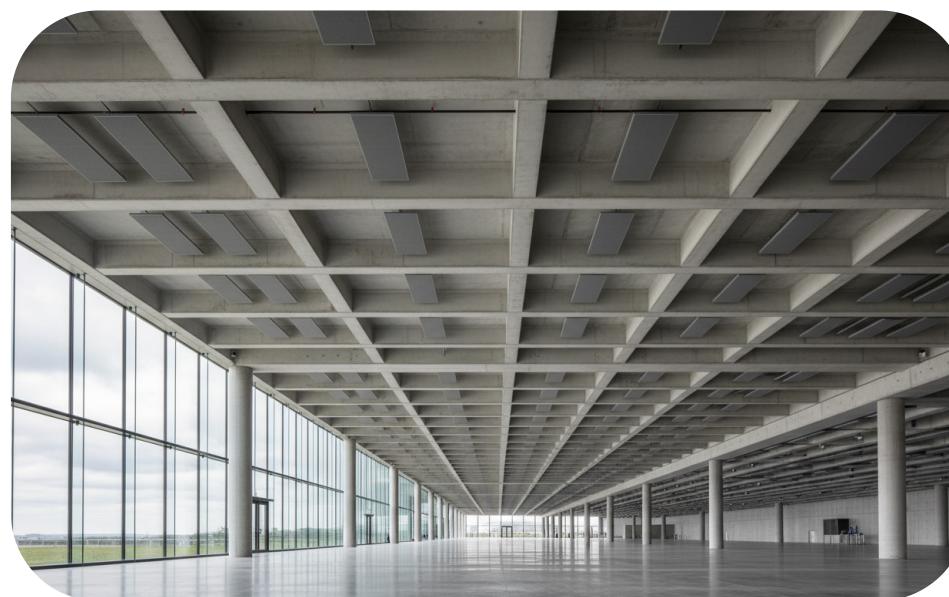
- Pile or raft foundations are planned to suit Lucknow clay soils.
- Engineering choices focus on long-term stability and performance.

Commercial Expertise



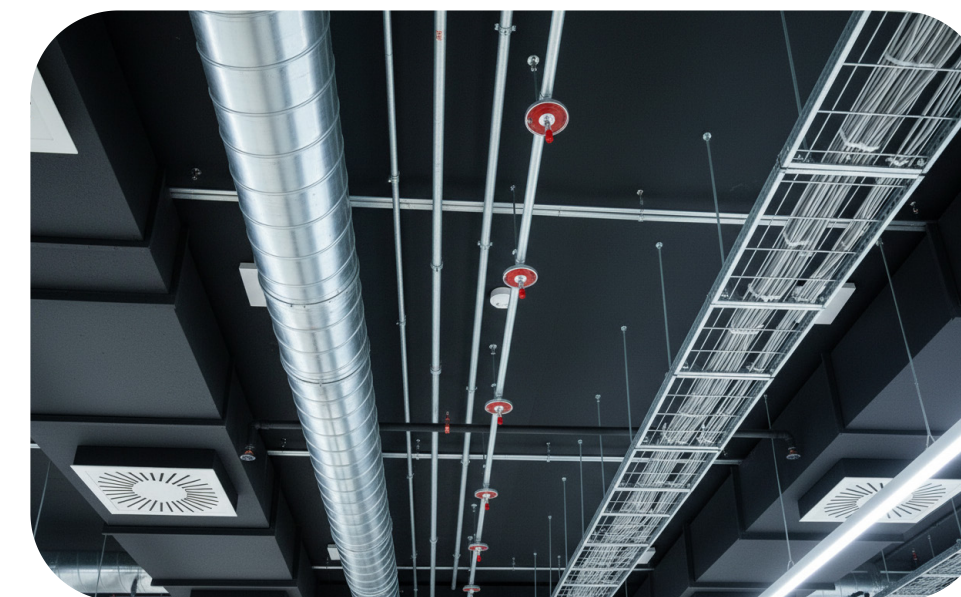
What we build

- We deliver offices, retail showrooms, plazas, and dining spaces.
- We also execute warehouses, industrial sheds, and institutional buildings.



Engineering capabilities

- We plan wide-span, column-light structures using RCC or steel framing.
- We integrate curtain-wall glazing and acoustic paneling where required.



Building-ready systems

- MEP routing includes HVAC ducts, drainage lines, and utility coordination.
- Fire safety readiness includes provisions for sprinkler system layouts.



Interiors and Renovations

Contact Number: +91 91514 68657 / +91 84004 68657

Email Address: connect.swastikhome@gmail.com

Website: <https://swastikhome.in>

Interior & Woodwork



Turnkey interior scope

- We deliver modular kitchens, ceilings, wardrobes, vanities, and feature panels.
- TV consoles, louvers, and accent walls are customized to your layout.



Materials that last

- Cabinets use **BWP marine plywood** with premium laminate or veneer finishes.
- Soft-close hardware is specified from trusted brands like Hettich or Hafele.



A coordinated final look

- Lighting-ready false ceilings and clean detailing create a unified finish.
- The focus stays on daily durability, easy maintenance, and consistent aesthetics.

Renovation Protection



Restore and reconfigure

- Repair beams and columns, and safely open layouts when needed.
- Strengthen existing structures using engineered retrofitting methods.



Stop leakage at the source

- Treat basements and damp walls with injection-based waterproofing.
- Protect terraces and bathrooms with multi-layer PU coatings.



Upgrade the exterior

- Modernize facades using ACP panels, cladding tiles, or texture paint.
- Improve durability while refreshing the building's street presence.



Process, Materials, and Quality

Contact Number: +91 91514 68657 / +91 84004 68657

Email Address: connect.swastikhome@gmail.com

Website: <https://swastikhome.in>



Our 6-Step Workflow

Align and plan

- Start with consultation, budget alignment, and an itemized estimate.
- Move into 2D/3D design, structure planning, and approvals support.

Build in clear stages

- Execute excavation, footings, columns, plinth beams, and roof slab.
- Complete brickwork, electrical and plumbing, then plastering.
- Finish with tiling, ceilings, woodwork, lighting, cleaning, and handover.

Accountability built-in

- A defined **6-step workflow** improves timelines, tracking, and ownership.



Verified Material Standards



Civil materials (shell work)

- Cement and steel are committed as verified brands in writing.
- Bricks, sand, and aggregates follow a pre-approved quality checklist.
- Waterproofing uses defined products, not on-site guesswork substitutions.



Finishes you can track

- Plywood, laminates, and hardware are selected from established brands.
- Tiles and sanitaryware are chosen from listed, widely trusted makers.
- Pipes and wiring are specified as branded options for reliability.



What this means for clients

- Clear standards make quality checks simpler during site visits.
- Written specs reduce confusion and help prevent material downgrades.

Quality & Transparency



Quality assurance on site

- Concrete strength is validated through cube tests in certified labs.
- Steel placement is checked for correct spacing before every casting.
 - Walls, frames, and tile lines are verified for straight alignment.



Clear billing and reporting

- Costs are tracked with an itemized BOQ and shared measurements.
- Progress is documented through weekly updates tied to milestones.
- Payments are released stage-wise as each phase is completed.



Warranty-backed delivery

- **5-year** warranty covers foundations, slabs, and structural pillars.
- **1-year** warranty supports key finishes like plumbing and electrics.



Portfolio and Client Engagement

Contact Number: +91 91514 68657 / +91 84004 68657

Email Address: connect.swastikhome@gmail.com

Website: <https://swastikhome.in>

Project Highlights



Residential landmark builds

- A **4,500 sq. ft.** signature villa delivered in Sushant Golf City.
- Multiple duplex homes executed with practical, modern planning.



Commercial and interior work

- Corporate office fit-outs completed for efficient, contemporary workplaces.
 - Premium penthouse interiors delivered with coordinated finishes and detailing.



Proven versatility

- Experience spans residential, commercial, and interiors across Lucknow.

Why Choose Swastik



One team, end-to-end delivery

- Design, engineering, construction, interiors, and finishing stay coordinated.
- A dedicated site engineer supports reviews and on-site execution.



Quality you can verify

- We commit to brand-specified materials in writing for traceability.
- Engineering discipline protects long-term structural performance and safety.



A smoother client experience

- Clear schedules, shared site measurements, and regular progress updates.
- Itemized BOQs and stage-based billing improve cost clarity.

Connect with Swastik



Start your project brief

Submit budget, location, and timeline through our online estimator.



Share plans for review

Email your drawings so our engineers can assess next steps.



Meet us in Lucknow

Visit our Sushant Golf City office for a detailed discussion.



Direct contact details

Call +91 91514 68657 or +91 84004 68657, or write to connect.swastikhome@gmail.com.